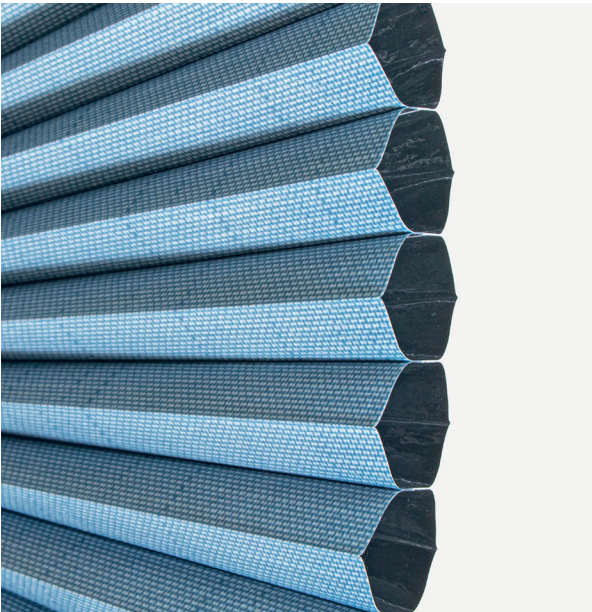


MOGRI

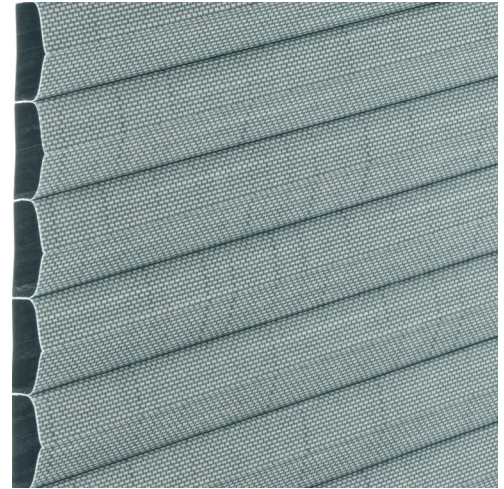
If you want to control the light, create privacy or are simply searching for a natural textured 'look', Mogri Blackout Honeycomb fabric is the right choice. Mogri Blackout has a delightfully natural color palette that blends perfectly with its unique woven effect. Choose any one of the subtle, fresh colors offered in two cell sizes to suit your contemporary or traditional interior decor.

BLACKOUT



GENERAL INFORMATION

Number of Colors	8	
Material Composition	100% Polyester	
Width	300 cm	118.00 in
Thickness (+/- 5%)	0,25 mm	0.0098 in
Weight (+/- 5%)	157 gr/m ²	4.63 oz/yd ²



- 25** = Available in 25 mm (3/8 inch) cell size
- 32** = Available in 32 mm (1/2 inch) cell size
- 38** = Available in 38 mm (9/16 inch) cell size **on request**
- 45** = Available in 45 mm (3/4 inch) cell size **on request**

SPECIAL VALUES

Color Fastness to Light	≥ 4 - 5 (DIN ISO 105-B02)
Transparency	Blackout
PVC Free	Yes
Lead Free	Yes
Halogen Free	Yes
Formaldehyde Free	Yes
Phthalates Free	Yes

Construction	Spun Lace Film-Laminated Non-Woven Fabric
Suitable for Workstations	No
Humid Environment	No
Manufacturing Procedure	Cold Cut
Care Instructions	Vacuum / Roller / Duster

SUITABLE FOR



Honeycomb

CARE & HANDLING

Remove dust with vacuum cleaner, compressed air, feather duster or roller type sticky remover.
Do not use solvents or any abrasive substance which might damage the coating of the fabric.

LIGHT AND SOLAR PROPERTIES

Item Number	Color	EU Standard Tested to DIN EN 410							EU Standard Tested to DIN EN 13363-1		
		Rv	Tv	Av	TUV	Rs	Ts	As	Gtot Value	FC-Value	FC-Class
83610-25/32	Light Gray	77%	0%	23%	0%	75%	0%	25%	0,16	0,18	2
83611-25/32	Sand	77%	0%	23%	0%	75%	0%	25%	0,16	0,18	2
83612-25/32	Taupe	77%	0%	23%	0%	75%	0%	25%	0,16	0,18	2
83613-25/32	Brown	77%	0%	23%	0%	75%	0%	25%	0,16	0,18	2
83614-25/32	Dark Gray	77%	0%	23%	0%	75%	0%	25%	0,16	0,18	2
83615-25/32	Steel	77%	0%	23%	0%	75%	0%	25%	0,16	0,18	2
83616-25/32	Blue	77%	0%	23%	0%	75%	0%	25%	0,16	0,18	2
83617-25/32	Tea	77%	0%	23%	0%	75%	0%	25%	0,16	0,18	2

Rv = Light Reflection

Tv = Light Transmittance

Av = Light Absorption

Rs = Solar Reflection

Ts = Solar Transmittance

As = Solar Absorption

TUV = Ultraviolet Transmittance

Gtot Value = The total transmission value of solar energy through a combination of window and sun protection

FC-Value = Reduction factor (from 0-1) of the fabric concerning solar energy

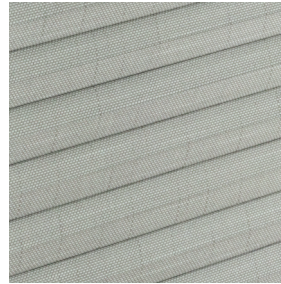
COLORS



83610-25/32
Light Gray



83611-25/32
Sand



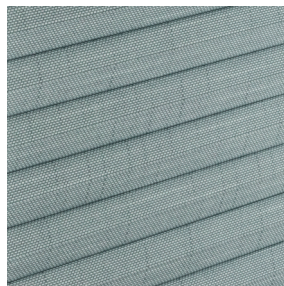
83612-25/32
Taupe



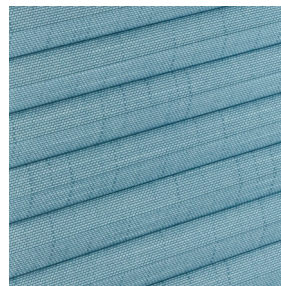
83613-25/32
Brown



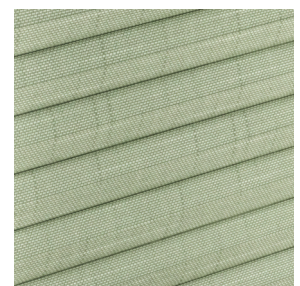
83614-25/32
Dark Gray



83615-25/32
Steel



83616-25/32
Blue



83617-25/32
Tea