

CHIANTI

If you want to share your color choice with the world outside your window, then choose Chianti. Select from two cell sizes in 6 classic colors that are shown on both the front and the reverse sides of the fabric. Choosing Chianti gives your window decor a deep, rich color tone that will enhance your home while making a bold statement.

TRANSLUCENT



GENERAL INFORMATION

| | | |
|----------------------|-----------------------|-------------------------|
| Number of Colors | 6 | |
| Material Composition | 100% Polyester | |
| Width | 300 cm | 118.00 in |
| Thickness (+/- 5%) | 0,23 mm | 0.0091 in |
| Weight (+/- 5%) | 147 gr/m ² | 4.34 oz/yd ² |

25 = Available in 25 mm (3/8 inch) cell size

32 = Available in 32 mm (1/2 inch) cell size



SPECIAL VALUES

| | |
|-------------------------|---------------------------|
| Color Fastness to Light | ≥ 4 - 5 (DIN ISO 105-B02) |
| Transparency | Translucent |
| PVC Free | Yes |
| Lead Free | Yes |
| Halogen Free | Yes |
| Formaldehyde Free | Yes |
| Phthalates Free | Yes |

| | |
|---------------------------|----------------------------------|
| Construction | Point Bonded Non-Woven Fabric |
| Suitable for Workstations | No |
| Humid Environment | No |
| Manufacturing Procedure | Cold Cut |
| Care Instructions | Vacuum / Roller / Duster |

SUITABLE FOR



Honeycomb

CARE & HANDLING

Remove dust with vacuum cleaner or compressed air. Do not use solvents or any abrasive substance which might damage the coating of the fabric. Clean with a sponge, soft brush or cloth. Leave the blind down until completely dry.

LIGHT AND SOLAR PROPERTIES

| Item Number | Color | EU Standard Tested to DIN EN 410 | | | | | | | EU Standard Tested to DIN EN 13363-1 | | |
|-------------|-----------|----------------------------------|-----|-----|-----|-----|-----|-----|--------------------------------------|----------|----------|
| | | Rv | Tv | Av | TUV | Rs | Ts | As | Gtot Value | FC-Value | FC-Class |
| 82335-25/32 | Cream | 41% | 26% | 33% | 13% | 40% | 26% | 34% | 0,41 | 0,47 | 1 |
| 82336-25/32 | Dune | 30% | 18% | 52% | 9% | 29% | 18% | 53% | 0,42 | 0,48 | 1 |
| 82337-25/32 | Taupe | 31% | 19% | 50% | 10% | 30% | 19% | 51% | 0,42 | 0,48 | 1 |
| 82338-25/32 | Sage | 33% | 19% | 48% | 10% | 32% | 19% | 49% | 0,41 | 0,47 | 1 |
| 82318-25/32 | Dark Gray | 26% | 15% | 59% | 8% | 25% | 15% | 60% | 0,42 | 0,48 | 1 |
| 82319-25/32 | Black | 41% | 25% | 34% | 8% | 19% | 15% | 66% | 0,45 | 0,52 | 1 |

Rv = Light Reflection **Tv** = Light Transmittance **Av** = Light Absorbtion
Rs = Solar Reflection **Ts** = Solar Transmittance **As** = Solar Absorbtion **TUV** = Ultraviolet Transmittance
Gtot Value = The total transmission value of solar energy through a combination of window en sun protection
FC-Value = Reduction factor (from 0-1) of the fabric concerning solar energy

COLORS



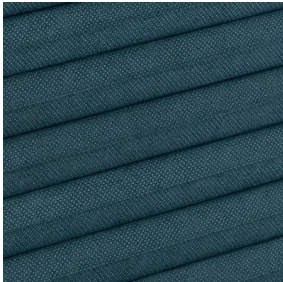
82310-25/32
White



82311-25/32
Ivory



82313-25/32
Sand



82316-25/32
Opal



82317-25/32
Light Gray



82334-25/32
Gray