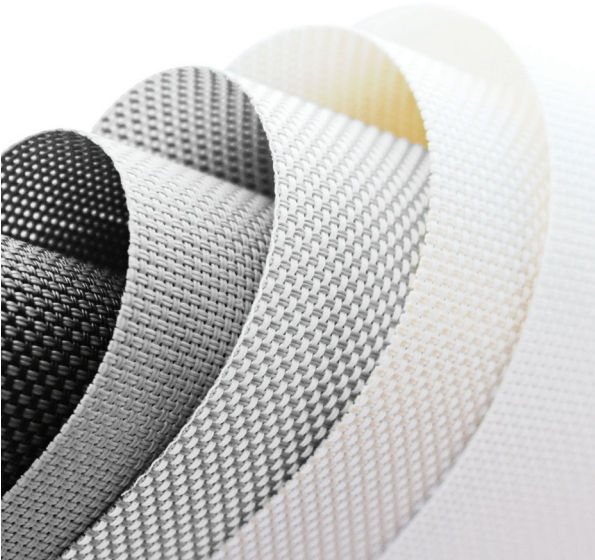


ESSENCE SCREEN 1%, 3% & 5%

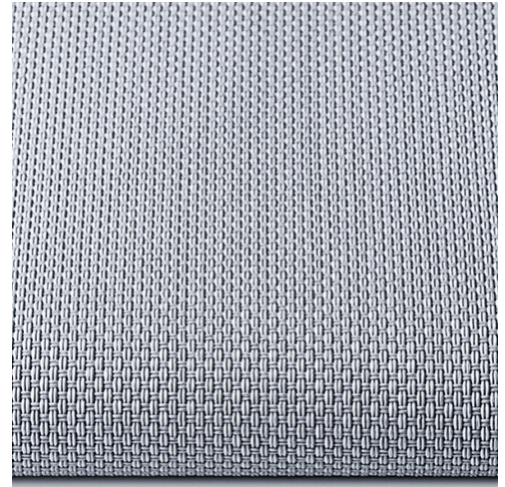
An array of soft and natural color tones adds a sense of serenity giving your interior style a feeling of comfort. With different openness factors available and also the peace of mind of the inherent flame retardant and anti-microbial finish, you can take complete control of the light and the safety in every window.

TRANSPARENT



GENERAL INFORMATION

Number of Colors	3 x 10		
Material Composition	30% Polyester / 70% PVC		
Openness Factor	1%	3%	5%
Thickness (+/- 5%)	0,69 mm	0,60 mm	0,55 mm
	0.0272 in	0.0236 in	0.0217 in
Weight (+/- 5%)	500 gr/m ²	460 gr/m ²	420 gr/m ²
	17.63 oz/yd ²	13.57 oz/yd ²	12.39 oz/yd ²
Width	200* / 300 cm	78.00* / 118.00 in	
Roll Length	30 m	32.81 yd	



SPECIAL VALUES

Color Fastness to Light	8 (DIN ISO 105-B02)	WARP	WEFT
Flame Retardancy	DIN 4102 B1 / EN 13773-1/NFPA-701, California U.S. Title 19 / CAN ULC-S109-03	Yarn Count	1%
			3%
			5%
Fungal Resistance	Yes (ASTM G21-15)	44/inch	62/inch
Antimicrobial	Yes (ASTM E2149)	46/inch	52/inch
Humid Environment	Yes	48/inch	48/inch
Suitable for Workstations	Yes		
Abrasion Resistance	> 10,000 (ASTM D4060)		
Manufacturing Procedure	Cold Cut / Ultrasonic Cutting		
Care Instructions	Damp Cloth		

SUITABLE FOR



CARE & HANDLING

Remove dust with vacuum cleaner or compressed air. Do not scrub. Do not use solvents or any abrasive substance which might damage the fabric. Clean with a sponge or a soft brush dipped in soapy water using mild detergent. Rinse with clean water. Leave the shade down until completely dry. You can also rub the fabric very gently with a clean white pencil eraser to remove small stains.

Version 20250404



The technical data above are average values with a +/- 5% tolerance. The values quotes above represent results of standards and internal tests performed and are provided for information only to enable to make the best use of our products. To ensure warranty effectiveness, refer to warranty certificate concerned available on demand. Our products are subjects to technical evolutions, we remain entitled to modify the characteristics of our products at any time. The buyer of our products is responsible for checking the validity of the above data.

Essence Screen 1%, 3% & 5%

Technical Data Sheet

THERMAL AND VISUAL PROPERTIES | DIN EN 410, EN ISO 52022-1, DIN EN 14501

Item Number	Color	Rs	Ts	As	Rv	Tv	Av	Tuv
E1-000-300 / ..-200*	Ice White	72,68%	17,49%	9,83%	80,10%	13,60%	6,30%	5,60%
E1-001-300 / ..-200*	White	73,44%	14,03%	12,53%	83,80%	11,11%	5,09%	0,80%
E1-002-300 / ..-200*	Ivory	64,09%	13,48%	22,43%	72,20%	9,58%	18,22%	0,30%
E1-003-300 / ..-200*	White Gray	53,61%	7,95%	38,44%	61,00%	5,20%	33,80%	0,30%
E1-010-300 / ..-200*	Black Gray	6,60%	0,72%	92,68%	6,30%	0,59%	93,11%	0,50%
E1-011-300 / ..-200*	Black	3,51%	0,38%	96,11%	3,60%	0,35%	98,05%	0,40%
E3-000-300 / ..-200*	Ice White	69,52%	22,25%	8,23%	76,50%	18,61%	4,89%	10,98%
E3-001-300 / ..-200*	White	70,20%	17,87%	11,93%	79,90%	15,25%	4,85%	5,80%
E3-002-300 / ..-200*	Ivory	58,86%	18,61%	24,53%	63,40%	14,59%	22,01%	5,70%
E3-003-300 / ..-200*	White Gray	42,62%	11,93%	45,45%	47,40%	9,12%	43,48%	5,90%
E3-010-300 / ..-200*	Black Gray	8,76%	7,54%	83,70%	8,30%	6,72%	84,98%	6,00%
E3-011-300 / ..-200*	Black	3,40%	5,95%	90,65%	3,50%	5,92%	90,58%	5,90%
E5-000-300 / ..-200*	Ice White	69,92%	21,31%	8,77%	76,80%	17,59%	5,61%	10,30%
E5-001-300 / ..-200*	White	68,30%	20,37%	11,33%	77,70%	17,70%	4,60%	7,90%
E5-002-300 / ..-200*	Ivory	56,48%	20,78%	22,74%	63,00%	16,81%	20,19%	7,60%
E5-003-300 / ..-200*	White Gray	43,26%	14,69%	42,05%	48,40%	11,99%	39,61%	8,00%
E5-010-300 / ..-200*	Black Gray	8,59%	9,65%	81,76%	8,20%	8,82%	82,98%	8,10%
E5-011-300 / ..-200*	Black	3,35%	8,06%	88,59%	3,40%	7,94%	88,66%	8,00%

Rs = Solar Reflection

As = Solar Absorption

Tv = Light Transmittance

Ts = Solar Transmittance

Rv = Light Reflection

Av = Light Absorption

TUV = Ultraviolet Transmittance

Version 20250404

The technical data above are average values with a +/- 5% tolerance. The values quotes above represent results of standards and internal tests performed and are provided for information only to enable to make the best use of our products. To ensure warranty effectiveness, refer to warranty certificate concerned available on demand. Our products are subjects to technical evolutions, we remain entitled to modify the characteristics of our products at any time. The buyer of our products is responsible for checking the validity of the above data.

THERMAL AND VISUAL PROPERTIES | DIN EN 410, EN ISO 52022-1, DIN EN 14501

Item Number	Color	Double glazing with low emission degree and argon interspace			Triple glazing with low emission degree and argon interspace		
		$U_g = 1,2 \text{ W/(m}^2\text{K)}$ $g = 0,59$			$U_g = 0,8 \text{ W/(m}^2\text{K)}$ $g = 0,55$		
		Gtot	Gtot Class	Fc	Gtot	Gtot Class	Fc
E1-000-300 / ..-200*	Ice White	0,3348	2	0,5674	0,3287	2	0,5977
E1-001-300 / ..-200*	White	0,3315	2	0,5619	0,3287	2	0,5928
E1-002-300 / ..-200*	Ivory	0,3618	1	0,6132	0,3287	1	0,6417
E1-003-300 / ..-200*	White Gray	0,3947	1	0,6689	0,3823	1	0,6952
E1-010-300 / ..-200*	Black Gray	0,5460	0	0,9254	0,5168	0	0,9396
E1-011-300 / ..-200*	Black	0,5560	0	0,9423	0,5257	0	0,9557
E3-000-300 / ..-200*	Ice White	0,3461	2	0,5867	0,3385	2	0,6155
E3-001-300 / ..-200*	White	0,3429	2	0,6551	0,3359	2	0,6108
E3-002-300 / ..-200*	Ivory	0,3429	1	0,6551	0,3745	1	0,6809
E3-003-300 / ..-200*	White Gray	0,3429	1	0,7311	0,4146	1	0,7538
E3-010-300 / ..-200*	Black Gray	0,5405	0	0,9161	0,5115	0	0,9301
E3-011-300 / ..-200*	Black	0,5576	0	0,9451	0,5268	0	0,9578
E5-000-300 / ..-200*	Ice White	0,3446	2	0,5841	0,3372	2	0,6132
E5-001-300 / ..-200*	White	0,3497	2	0,5927	0,3418	2	0,6214
E5-002-300 / ..-200*	Ivory	0,3882	1	0,6580	0,3759	1	0,6835
E5-003-300 / ..-200*	White Gray	0,4299	1	0,7286	0,4131	1	0,7511
E5-010-300 / ..-200*	Black Gray	0,5415	0	0,9179	0,5123	0	0,9315
E5-011-300 / ..-200*	Black	0,5582	0	0,9462	0,5272	0	0,9586

Gtot Value = The total transmission value of solar energy through a combination of window and sun protection

Fc-Value = Reduction factor (from 0-1) of the fabric concerning solar energy

Essence Screen 1%, 3% & 5%

Technical Data Sheet

THERMAL AND VISUAL PROPERTIES | DIN EN 410, EN ISO 52022-1, DIN EN 14501

Item Number	Color	Color Rendering Index	Glare Control Class	Night Privacy Class	Visual Contact Class	Daylight Utilisation Class
E1-000-300	Ice White	90,30	2	2	1	2
E1-001-300	White	88,00	2	2	1	1
E1-002-300	Ivory	78,40	3	2	1	1
E1-003-300	White Gray	87,20	3	2	1	1
E1-010-300	Black Gray	98,90	4	2	2	0
E1-011-300	Black	99,60	4	2	2	0
E3-000-300	Ice White	93,60	0	1	2	2
E3-001-300	White	91,90	0	1	2	2
E3-002-300	Ivory	84,60	0	1	2	2
E3-003-300	White Gray	93,80	0	1	3	1
E3-010-300	Black Gray	97,70	0	1	3	1
E3-011-300	Black	99,70	0	1	3	1
E5-000-300	Ice White	93,60	0	2	1	2
E5-001-300	White	93,00	0	1	2	2
E5-002-300	Ivory	87,10	0	1	2	2
E5-003-300	White Gray	94,20	0	1	2	1
E5-010-300	Black Gray	98,80	0	1	3	1
E5-011-300	Black	99,70	0	1	3	1

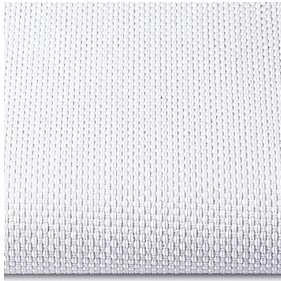
Influence on visual comfort					
Class	0	1	2	3	4
Effect	Very small	small	moderate	high	very high

All data is purely indicative and non-contractual

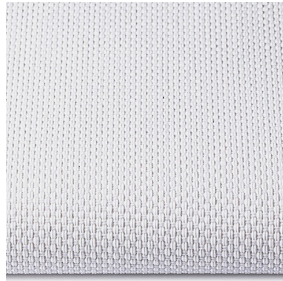
Version 20250404

The technical data above are average values with a +/- 5% tolerance. The values quotes above represent results of standards and internal tests performed and are provided for information only to enable to make the best use of our products. To ensure warranty effectiveness, refer to warranty certificate concerned available on demand. Our products are subjects to technical evolutions, we remain entitled to modify the characteristics of our products at any time. The buyer of our products is responsible for checking the validity of the above data.

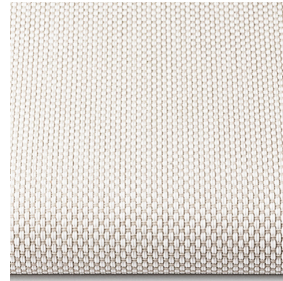
COLORS



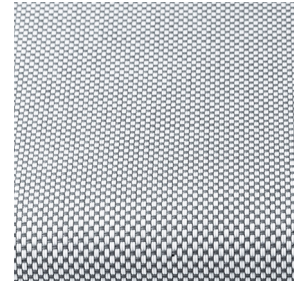
E1-000-300 / ..-200*
E3-000-300 / ..-200*
E5-000-300 / ..-200*
Ice White



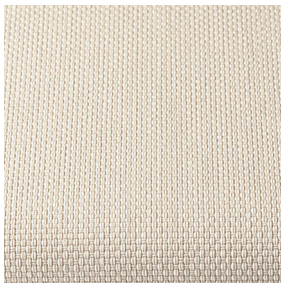
E1-001-300 / ..-200*
E3-001-300 / ..-200*
E5-001-300 / ..-200*
White



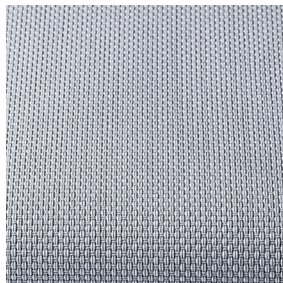
E1-002-300 / ..-200*
E3-002-300 / ..-200*
E5-002-300 / ..-200*
Ivory



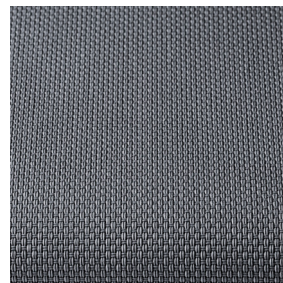
E1-003-300 / ..-200*
E3-003-300 / ..-200*
E5-003-300 / ..-200*
white/gray



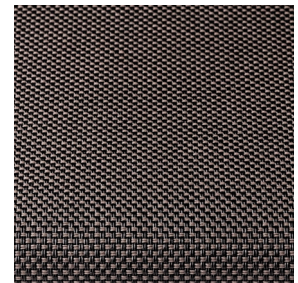
E1-004-300 / ..-200*
E3-004-300 / ..-200*
E5-004-300 / ..-200*
Alabaster



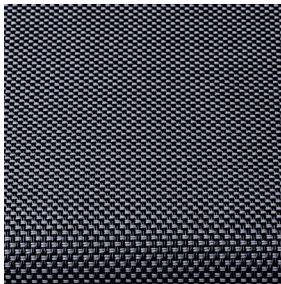
E1-005-300 / ..-200*
E3-005-300 / ..-200*
E5-005-300 / ..-200*
light gray



E1-006-300 / ..-200*
E3-006-300 / ..-200*
E5-006-300 / ..-200*
Gray



E1-008-300 / ..-200*
E3-008-300 / ..-200*
E5-008-300 / ..-200*
Black/ Brown



E1-010-300 / ..-200*
E3-010-300 / ..-200*
E5-010-300 / ..-200*
black/gray



E1-011-300
E3-011-300
E5-011-300
black

Scan the QR-code for more information



Essence Screen 1%



Essence Screen 3%



Essence Screen 5%